

# WORLD POTTERY THROUGH THE AGES

Willmar Senior High Ceramics

# EARLY CIVILIZATIONS

# IRAQ



Halaf Dish 4900 B.C.



Samarra Ware 5000 B.C.



# IRAN



Ritual Bowl 4000 B.C.



Susa Pot 2800 B.C.



Sialk Storage Jar 3500



Beak-spouted Jar 1100 B.C.



# GREECE



Crete  
1450 B.C.

Amphora  
660 B.C. 540 B.C.



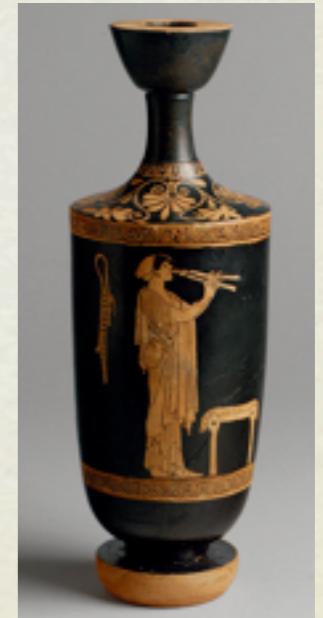
Found on Crete  
1775-1750 B.C.



750 B.C., Krater



Stamnos



Lekythos

MIDDLE TO EASTERN  
ASIA

# CHINA



Beak-spouted Jar  
3500 B.C.



Longshan  
Around 2250 B.C.



5000-4000 B.C.



# KOREA



Chulmun Storage Jar  
3500 B.C.



Funerary Urns 800 B.C.



Goryeo Period, Celadon  
918-1392



Punch'ong Ware 1392-1910



# JAPAN



Flame-Rimmed Vessel  
Jomon Period  
2000 B.C.



# PHILIPPINES



Manunggul Jar  
800 B.C.



Maitum Anthropomorphic Jars  
100 A.D.

# AFRICA

# CAMEROON



# DEMOCRATIC REPUBLIC OF CONGO

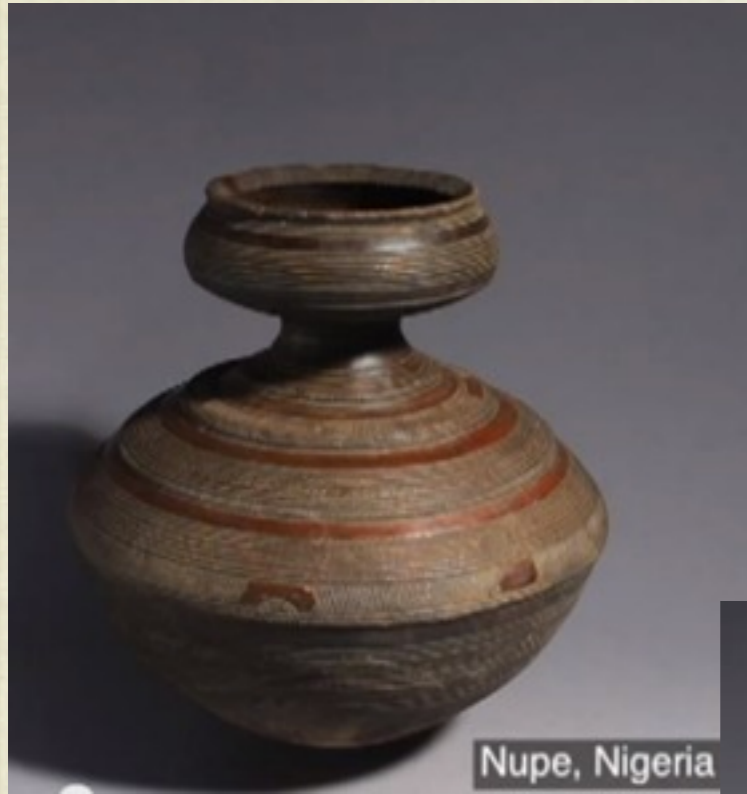


Democratic Republic of the Congo



Democratic Republic of the Congo

# NIGERIA



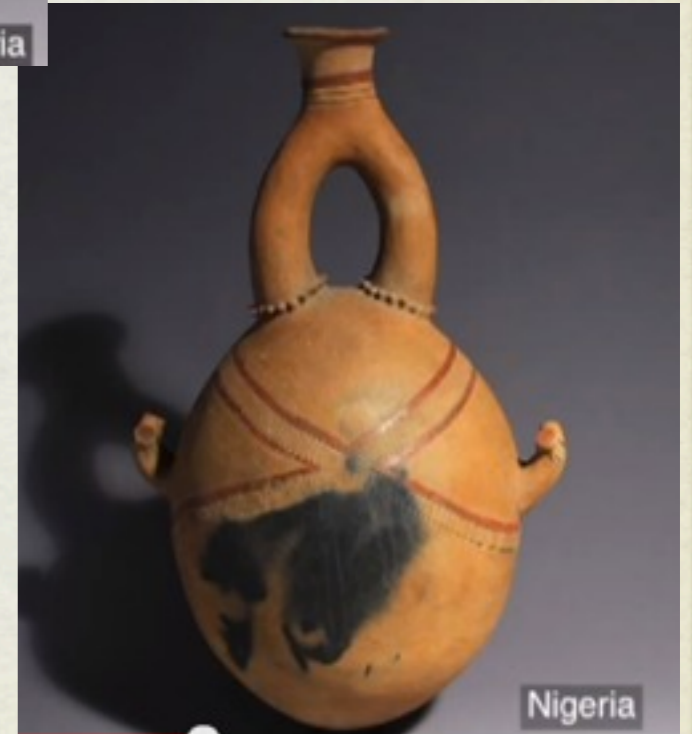
Nupe, Nigeria



Igbo, Nigeria



Igbo, Nigeria



Nigeria

# MALI



# REPUBLIC OF SOUTH AFRICA



Zulu, Republic of South Africa



Zulu, Republic of South Africa



# TANZANIA



Makonde, Tanzania

# MALAWI



Nyakusa, Malawi

# AMERICAS

# MEXICO



Squash Vessel  
50 A.D.



Aztec Mandala



# NAVAJO



# HOPI

